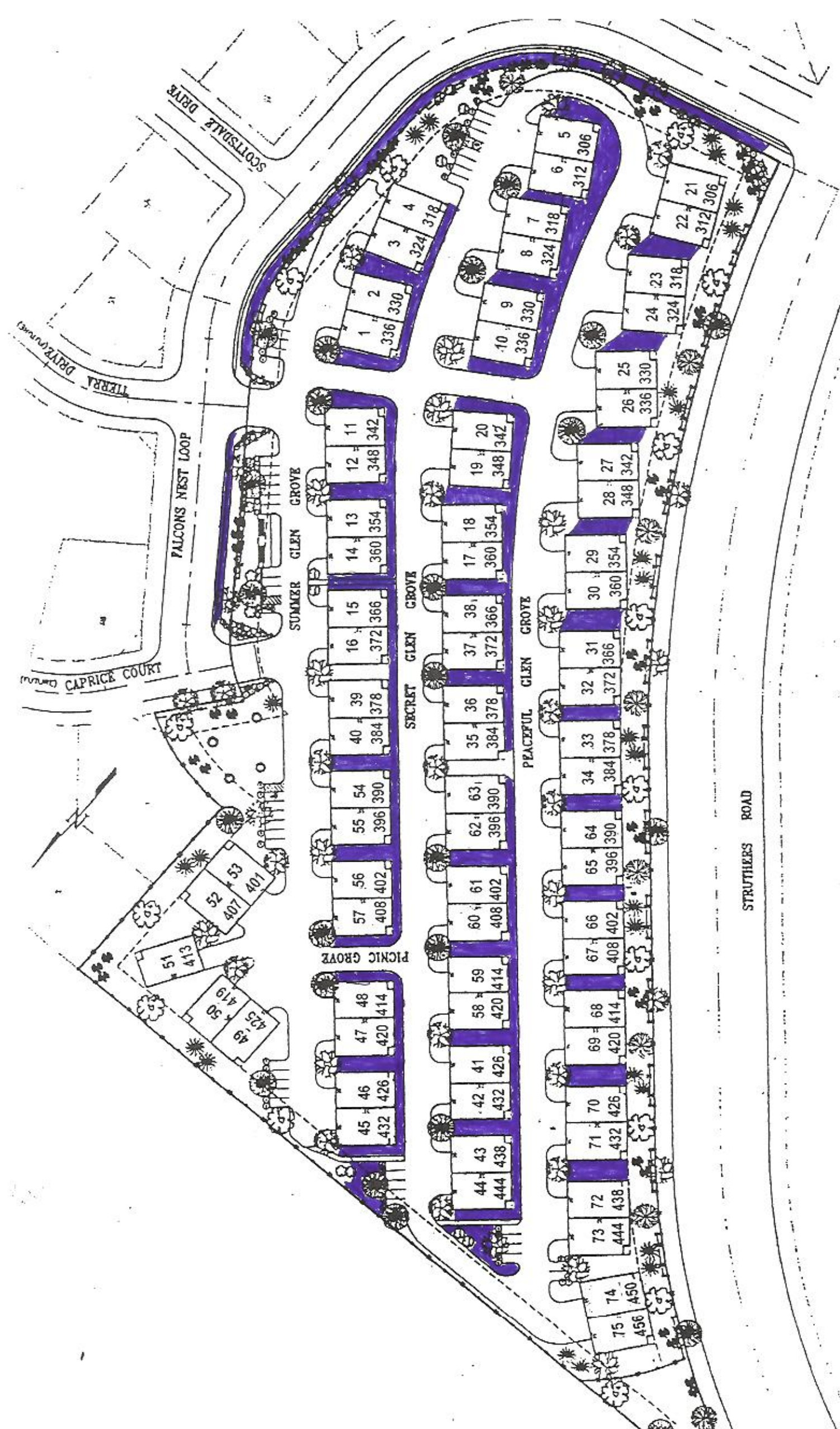


The grass areas to be removed would be:

1. All of the grass outside of the East and South wall to our community along Falcon Nest Loop.
2. All of the grass between the homes on all three of our streets, leaving the lawn area in front of all of the homes in the community.
3. The grass areas behind the homes on Summer Glen Grove and Secret Glen Grove would be removed as well.
4. We would remove the grass areas at the very south end of Secret Glen Grove and at the very north end of Summer Glen Grove and Secret Glen Grove.

See Plot Plan below.



STRUTHERS ROAD